

Dear School Swimming Contact,

Here are your 2015/2016 final Swimming results and the subsequent analysis of them so you can share the information with your colleagues. The service average contains the results from all year groups of all Infant, Primary and Special schools that swam with the service.

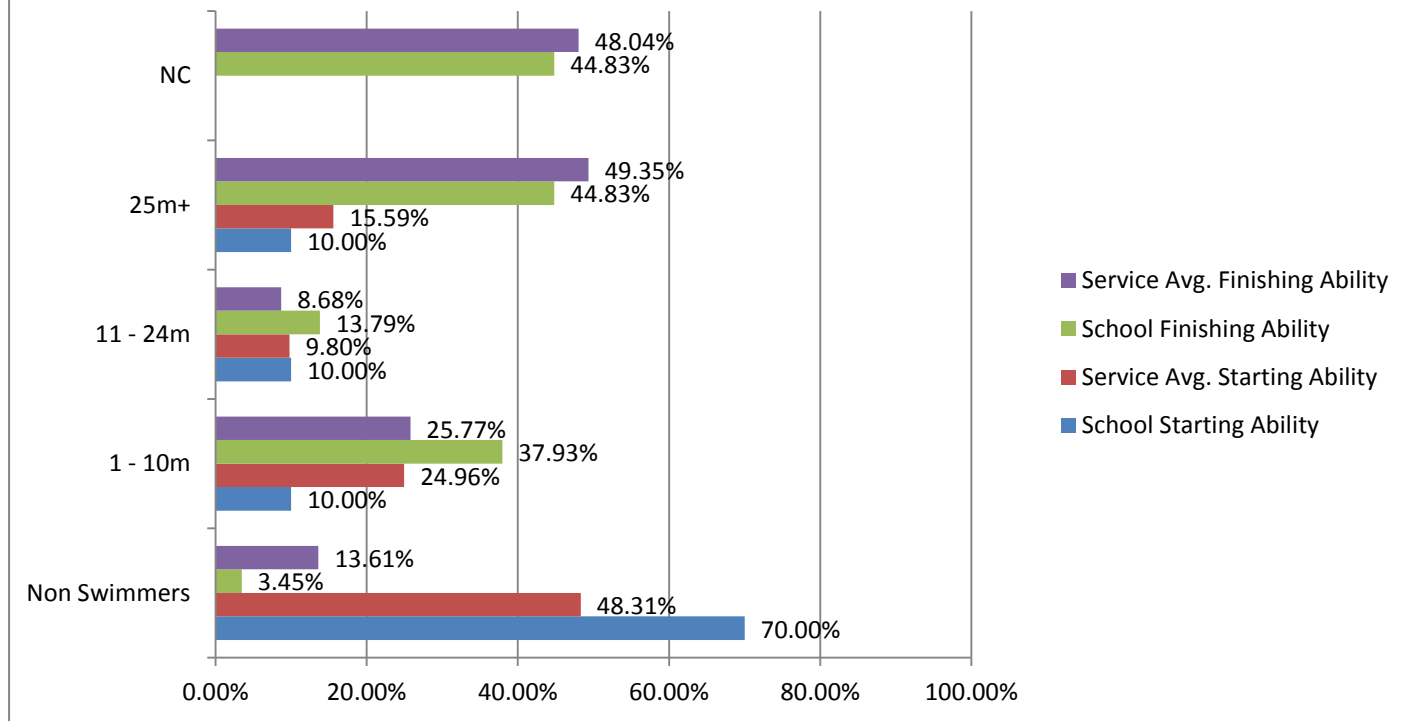
Swimming Service average compared to 2014/2015

	Starting ability		Finishing Ability	
	2014/2015	2015/2016	2014/2015	2015/2016
Non Swimmer	50.45%	48.31%	13.45%	13.61%
1 – 10m	22.79%	24.96%	25.45%	25.77%
11 – 24m	9.09%	9.80%	8.15%	8.68%
25m+	16.74%	15.59%	52.24%	49.35%
National Curriculum			50.51%	48.04%

Your school results

18 Weeks	St Theresa's Catholic Primary, Mon 9.50am		Y4	
	School Starting Ability	Service Avg. Starting Ability	School Finishing Ability	Service Avg. Finishing Ability
No. of Children	30	27.92	29	27.16
Non Swimmers	70.00%	48.31%	3.45%	13.61%
1 - 10m	10.00%	24.96%	37.93%	25.77%
11 - 24m	10.00%	9.80%	13.79%	8.68%
25m+	10.00%	15.59%	44.83%	49.35%
NC			44.83%	48.04%

St Theresa's Catholic Primary, Mon 9.50am: Y4: 18 Weeks



* If the percentage doesn't add up to 100% then a child/multiple children were not assessed (e.g. they were away during the assessment week).

Many thanks, the School Swimming team.